

FRAME SHOWN WITHOUT HARDWARE CLOTH OR FABRIC SLIPCOVER FOR CLARITY.

50 X 100 BRIDGING AT 1/3 SPAN (STAGGERED)

ALL MATERIAL EXCEPT CONCRETE

610 mm LONG 100 X 100 (EACH CORNER)

610

470

457

457

2769

470

457

457

2667

686

406

50x100 STUDS AT 1/3 SPAN

50 x 100 STUD AT MID-SPAN

GRADED DITCH FLOW

2540 SQUARE

N.T.S.

- NO. 10 X 89 mm GALVANIZED DECK SCREWS (TYP. ALL LOCATIONS)
- 50 X 100 BLOCKING
- TWO 50 X 100 STOP BLOCKS  
546 mm LONG EACH CORNER.  
FLUSH WITH TOP MEMBER
- 50 X 150 ON EDGE, TOP  
& BOTTOM - BOTH SIDES

SLIPCOVER FILTER FABRIC  
OVER HARDWARE CLOTH

254 X 305 ANCHOR TRENCH  
BACKFILL WITH MINERAL  
AGGREGATE (SIZE NO. 57)

CATCH BASIN TYPE	
12SD	41SD
25SD	42SD
31SD	51SD
39SD	

76mm MIN.

76mm MIN.

TRIM ALLOWANCE REQUIRED FOR FABRIC ENDS THAT ARE 76mm (3") OR MORE.

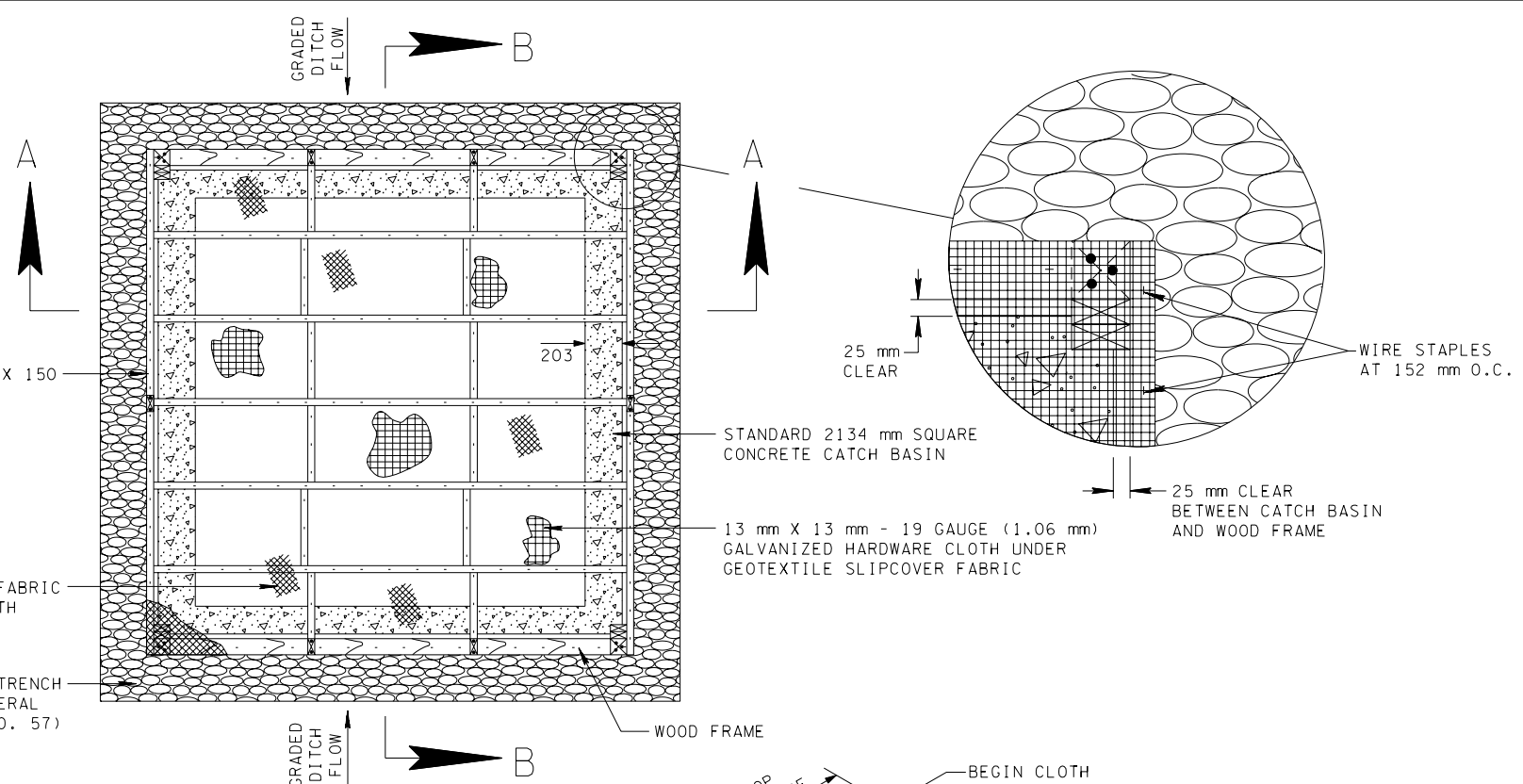
N.T.S.

EROSION CONTROL PLAN LEGEND:

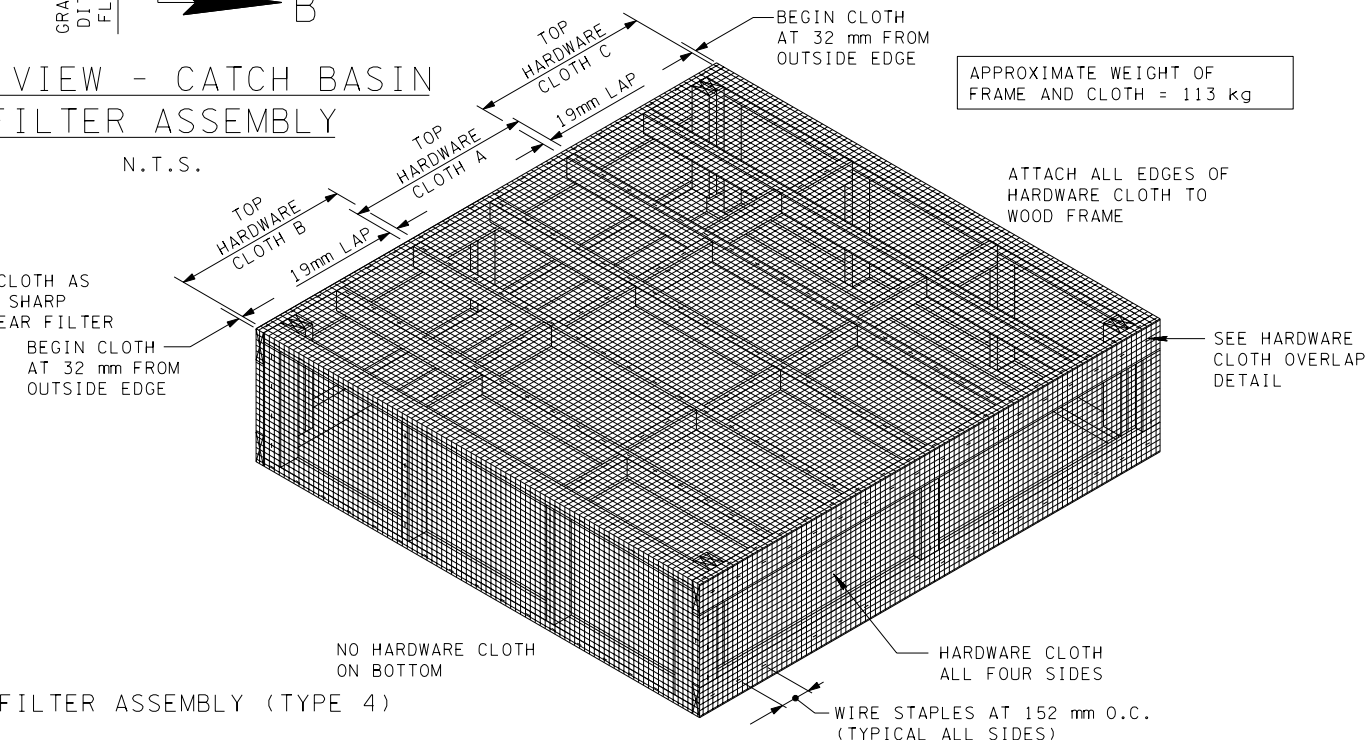


4

CATCH BASIN FILTER ASSEMBLY (TYPE 4)



N.T.S.



N.T.S.

TRIM EXCESS ALONG BOTTOM AS NECESSARY.



CATCH BASIN  
FILTER ASSEMBLY  
(TYPE 4)

4-15-04 ECM-STR-44